












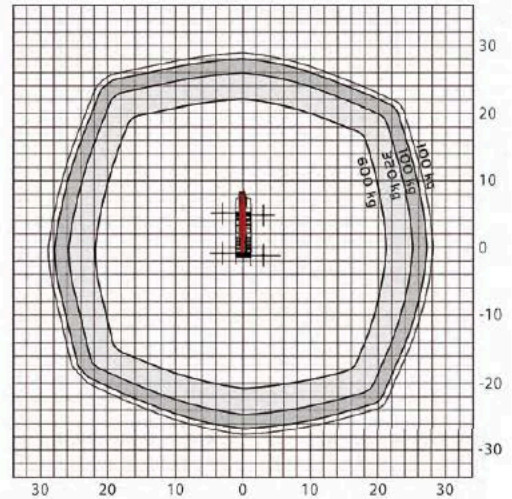
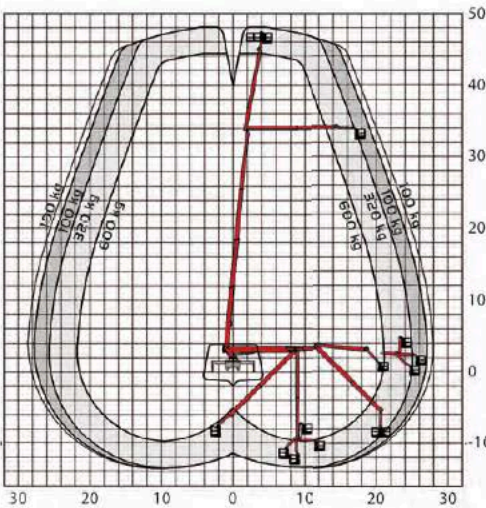


TECHNISCHE DATEN

	Gesamtgewicht*	17600 kg		max. Reichweite	31 m
	Transportlänge	9,92 m		Schwenkbereich Drehtisch	540°
	Transportbreite	2,51 m		Drehwinkel Arbeitskorb	2 x 200°
	Transporthöhe	3,96 m		Drehwinkel Korbarm	240°
	max. Abstützbreite	6,30 m		Größe Arbeitskorb	3,88 x 1,05 x 1,10 m
	max. Arbeitshöhe	48 m		max. Korblast	600 kg
	max. Korbbodenhöhe	46 m			

* In Abhängigkeit vom Lkw-Fahrgestell

ARBEITSDIAGRAMME



2% Toleranz bauteilbedingt möglich

ABMESSUNGEN

